

## Going the extra mile to achieve Traceability to the Plantation (TTP)

### 1. Commitment to sustainability

- Golden Agri-Resources' (GAR) sustainability is guided by the [GAR Social and Environmental Policy](#) which consists of the following four pillars:



Environmental Management



Social and Community Engagement



Work Environment and Industrial Relations



Marketplace and Supply Chain

- This fact sheet focuses on the last pillar - marketplace and supply chain commitments

1  **Traceable and transparent** supply chain

4  **Compliance** with all relevant laws and international certification's principles and criteria

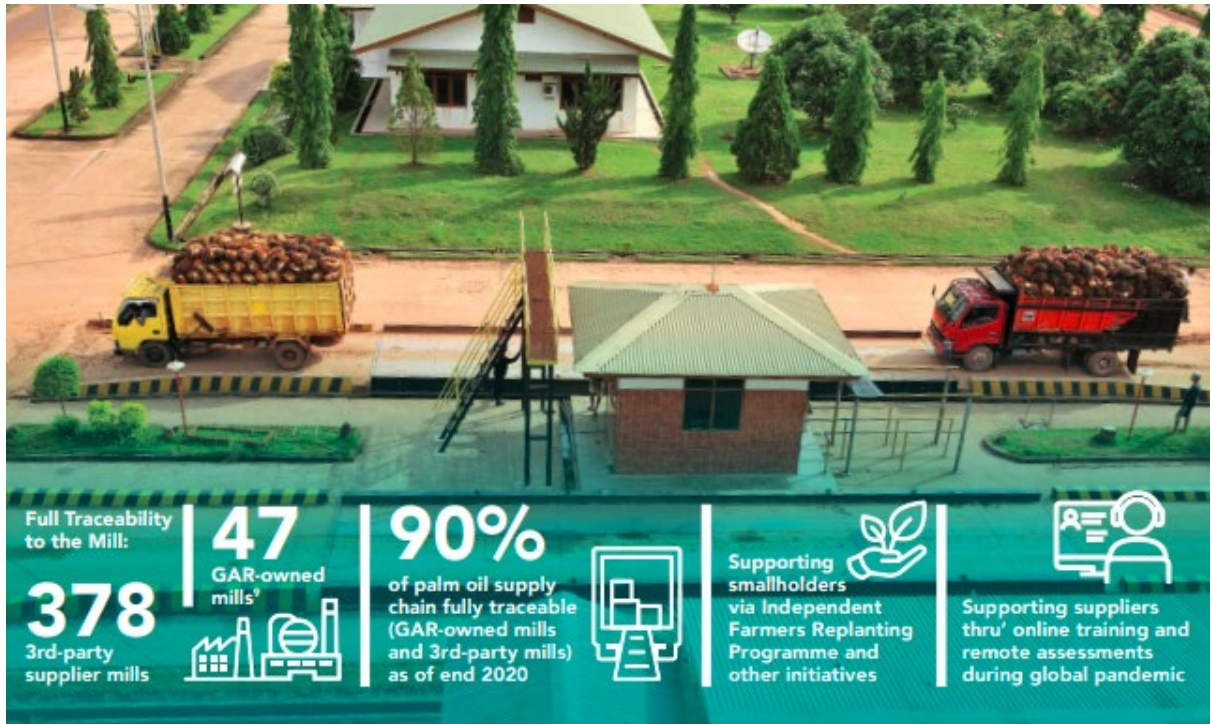
2  **Support** to suppliers

5  **Implementation** of practices to comply with the full extent of GAR policies

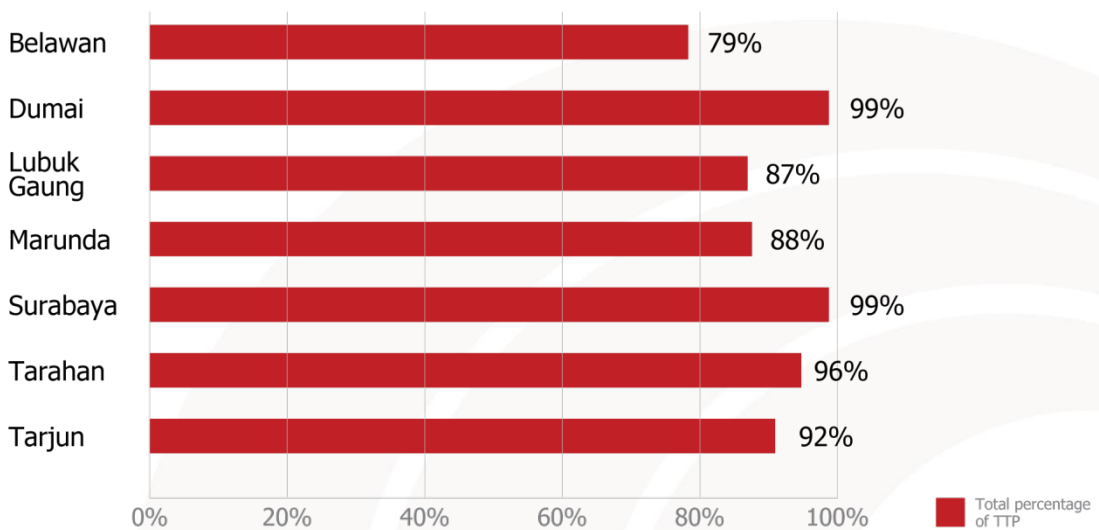
3  **Due diligence and grievance procedure**

### 2. Traceability achieved as of December 2020

- Achieved 100 percent of Traceability to the Mill (TTM) in 2015
- Achieved 90 percent of TTP for GAR-owned mills and third-party mills at the end 2020



**Percentage of Traceability to Plantation by Refinery  
January-December 2020**



- Every quarter, suppliers are required to submit their TTP declaration forms

Estate	Farmer	Dealer/Agent
<b>Mandatory</b>	<b>Mandatory</b>	<b>Mandatory</b>
<ul style="list-style-type: none"> <li>• Group Company</li> </ul>	<ul style="list-style-type: none"> <li>• Name of Farmer/Farm Manager</li> </ul>	<ul style="list-style-type: none"> <li>• Name of Agent/Dealer</li> </ul>

• Name of Company	• Location of Farm (Village, Sub District, District, Province)	• Address of Dealer (Village, Sub District, District, Province)
• Nama of Estate	• Geospatial Coordinate of Farm	• List of Suppliers: Estates and Farmers)
• Type of Estate (Inti/Plasma/External)	• Area of Plantation (Hectare)	• Total Area Cultivated by Estates or Smallholder suppliers
• Location of Estate (Village, Sub District, District, Province)	• Total Volumes of FFB Procured (Tonnes Per Month)	• Location of Suppliers (Village, Sub District, District, Province)
• Map of Estate with Georeferenced	• Name of Dealer/Agent Handling the FFB	• Volumes of FFB Supplied (Tonnes Per Month)
• Area of Plantation (Hectares)		• Percentage Breakdown of FFB Supply of Estate & Smallholder
• Total Volumes of FFB Procured (Tonnes Per Month)		• List of Suppliers: Estate or Smallholder
<b>Optional</b>	<b>Optional</b>	
• Land Tenure Title (HGU/SHM/Process)	• Organisation (Individual/Group)	
• Year of Planting	• Year of Planting	
• Certification (RSPO/ISPO/ISCC)	• Certification (RSPO/ISPO/ISCC)	
	• Land Tenure Title (SHM/SKGR/SKT)	

### 3. Traceability to inform our understanding of our supply chain

- In 2019, GAR launched [Ksatria Sawit Programme](#) to accelerate the TTP process
- The programme focuses on smallholders and traces their agents and farmers
- To profile smallholders, we go into the field, meet them in person and collect spatial and agronomical data
- We deposit smallholder data into the PalmOilTrace system to generate baseline reports. PalmOilTrace interactive mapping captures:
  - Government approved land use maps
  - Restricted and approved agricultural areas
  - Animal conservation areas
  - Administrative boundaries
  - Sourcing distance to mills and agents
  - Agents/traders, nurseries, and mill locations
  - Farmer categorisation as smallholders or SME, certification standards, farm yields, farm age, fertiliser, and pesticide use

#	Refinery	No of mill	No of smallholder	No of plantation	Plantation area (Ha)	Average plantation area (Ha)	Average age of farmers	No of province	No of village
1	Belawan	21	31,375	32,905	130,291	4	46	8	870
2	Dumai	5	12,256	13,332	38,177	3	49	4	80
3	Lubuk Gaung	28	47,900	50,265	226,501	5	46	7	626
4	Marunda	1	642	999	12,239	12	41	2	36
5	Surabaya	1	2,874	2,889	11,869	4	43	1	41
6	Tarahan	9	23,409	24,691	75,892	3	48	6	405
7	Tarjun	2	566	1,192	3,046	3	46	2	38

- We generate supply chain maps and identify smallholder positions relative to forests and other ecosystems



#### 4. Beyond traceability – monitoring our supply chain

- Traceability information combined with technology enables GAR to give customers our assurance of a deforestation-free supply chain
  - GAR has [partnered](#) with Agritech company, Satelligence, to monitor its supply chain throughout Indonesia

- Satelligence is providing GAR with near real-time deforestation alerts in and outside supplier concessions
- Traceability data also informs and enables industry collaboration in supporting palm smallholders
  - GAR, in partnership with Koltiva and Mars, will pilot a programme targeting 4,000 smallholders in Aceh, to help them become more responsible producers
  - We use the smallholder baseline reports and maps to inform interventions such as sustainability capacity-building programmes. Some of the activities include smallholder mapping and selecting, one-on-one coaching, field training on Good Agricultural Practices, and sustainability awareness

**For more information, please contact:**

Ian Suwarganda

Head of Policy &amp; Advocacy

[ian.suwarganda@goldenagri.com.sg](mailto:ian.suwarganda@goldenagri.com.sg)

+65 6590 0857